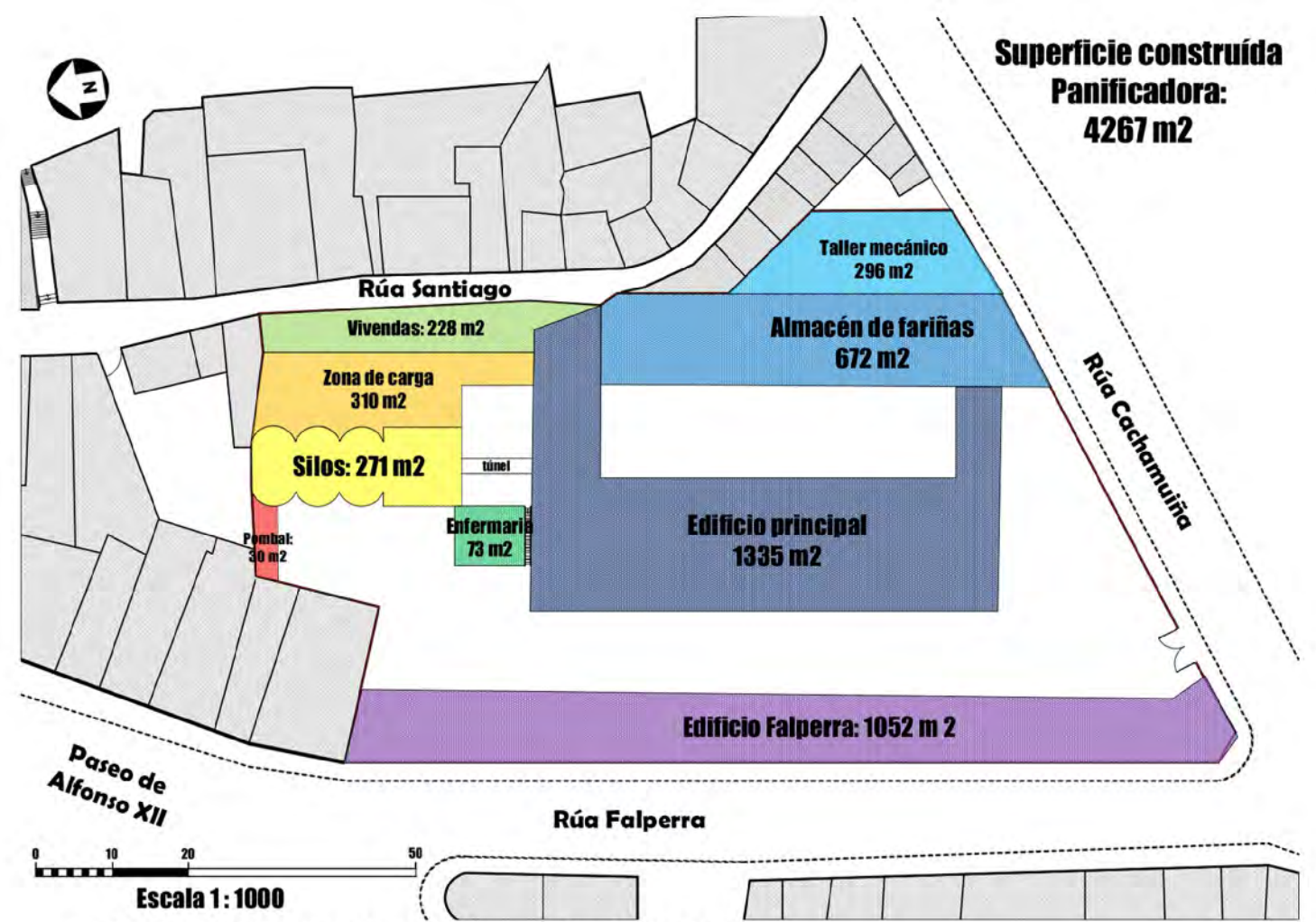
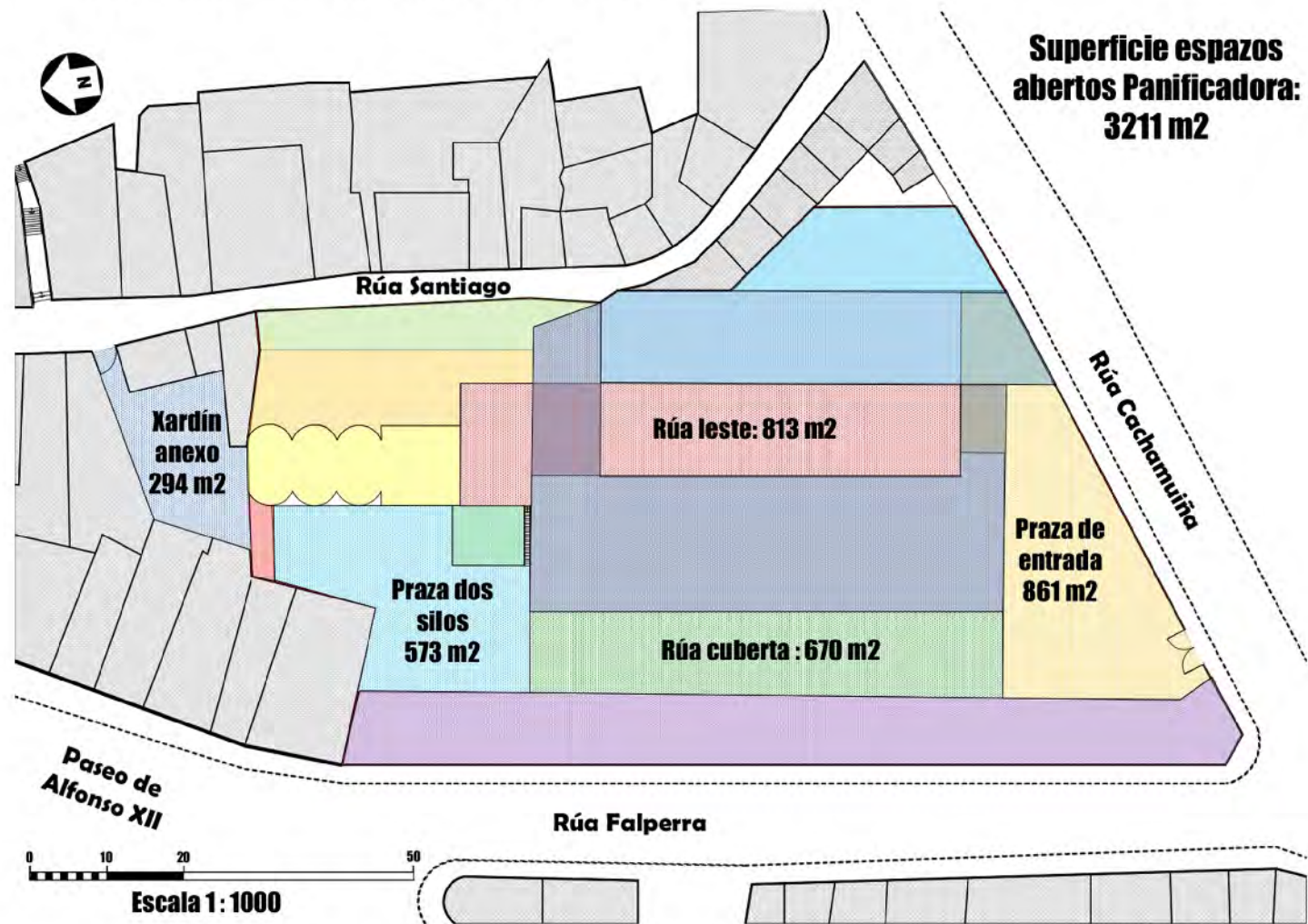


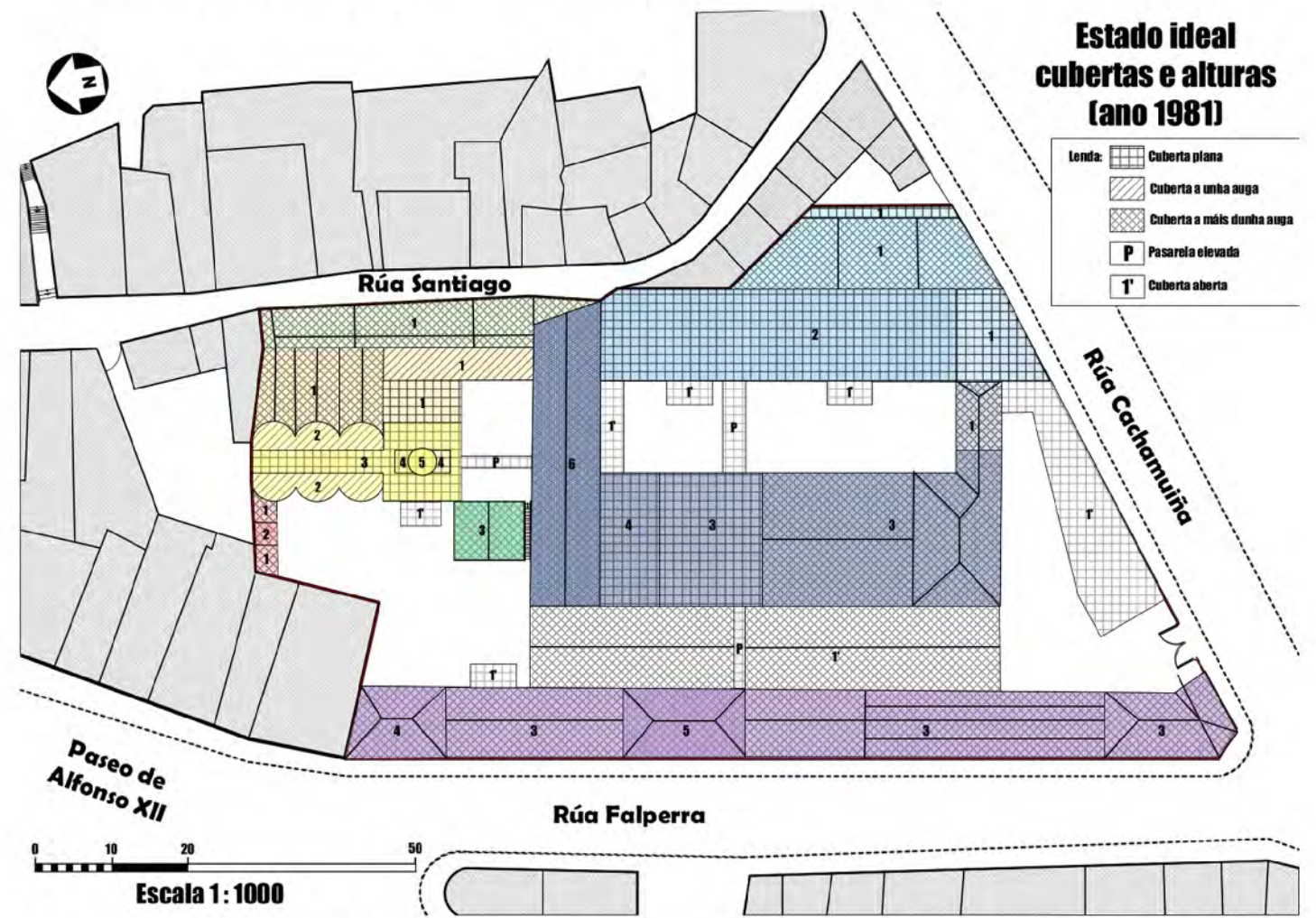
1. Conxunto a rehabilitar no extremo sur da Falperra.



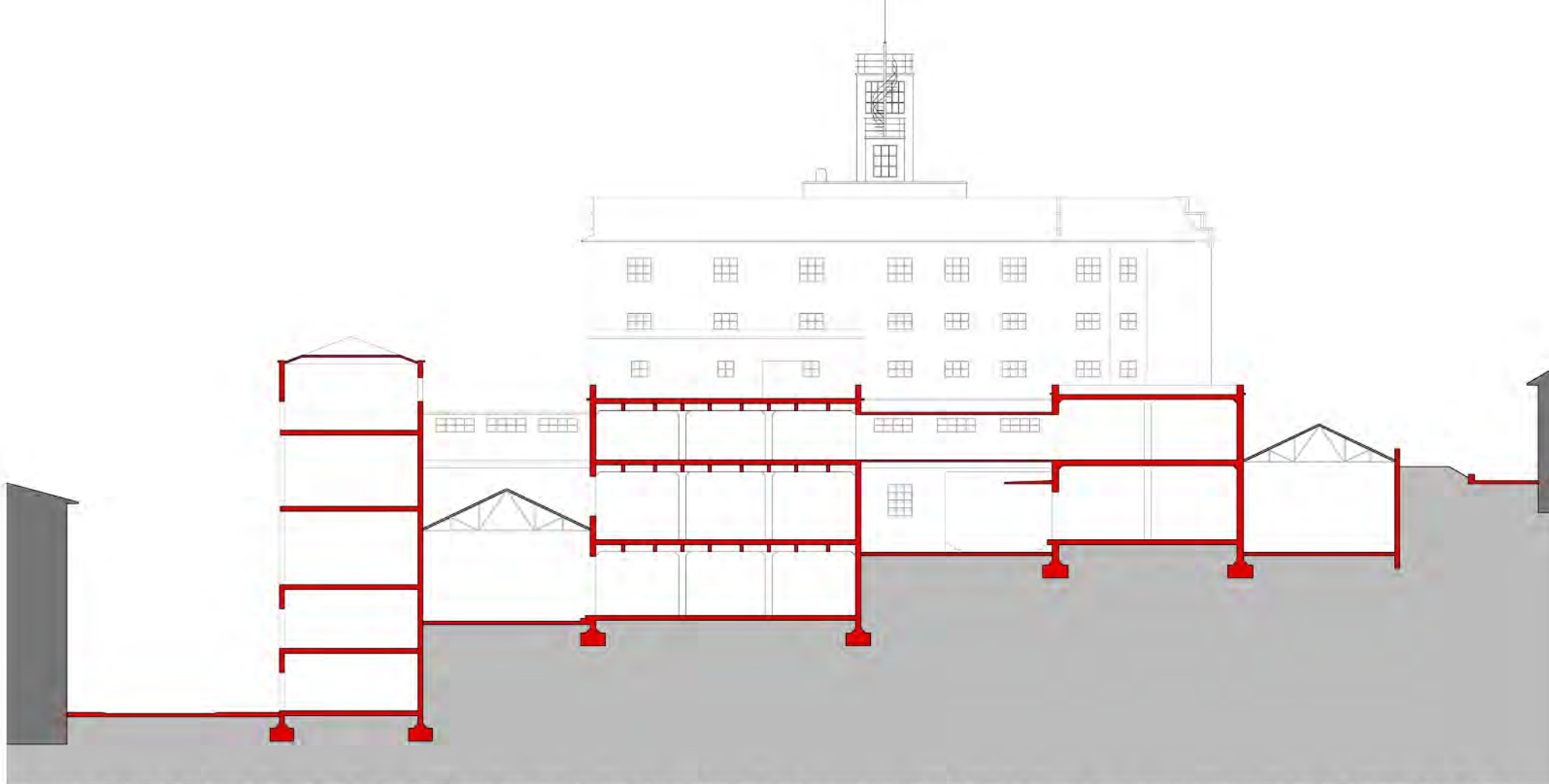
2. Tamaño e distribución dos elementos construídos da Panificadora.



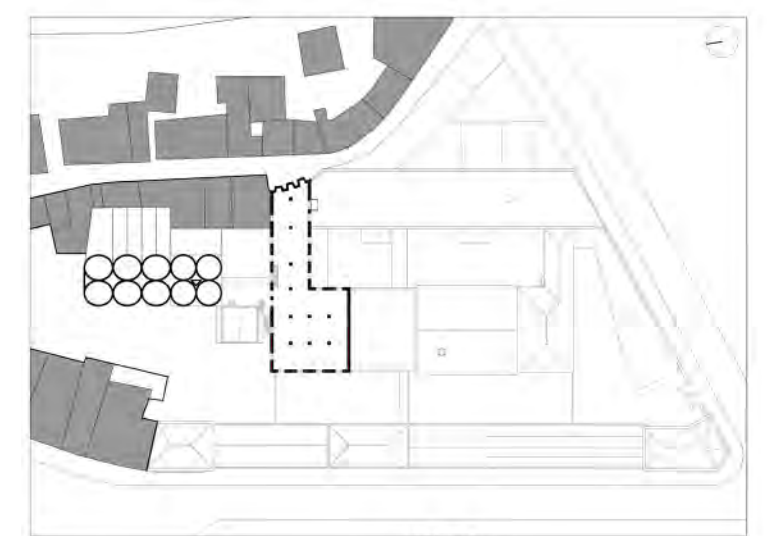
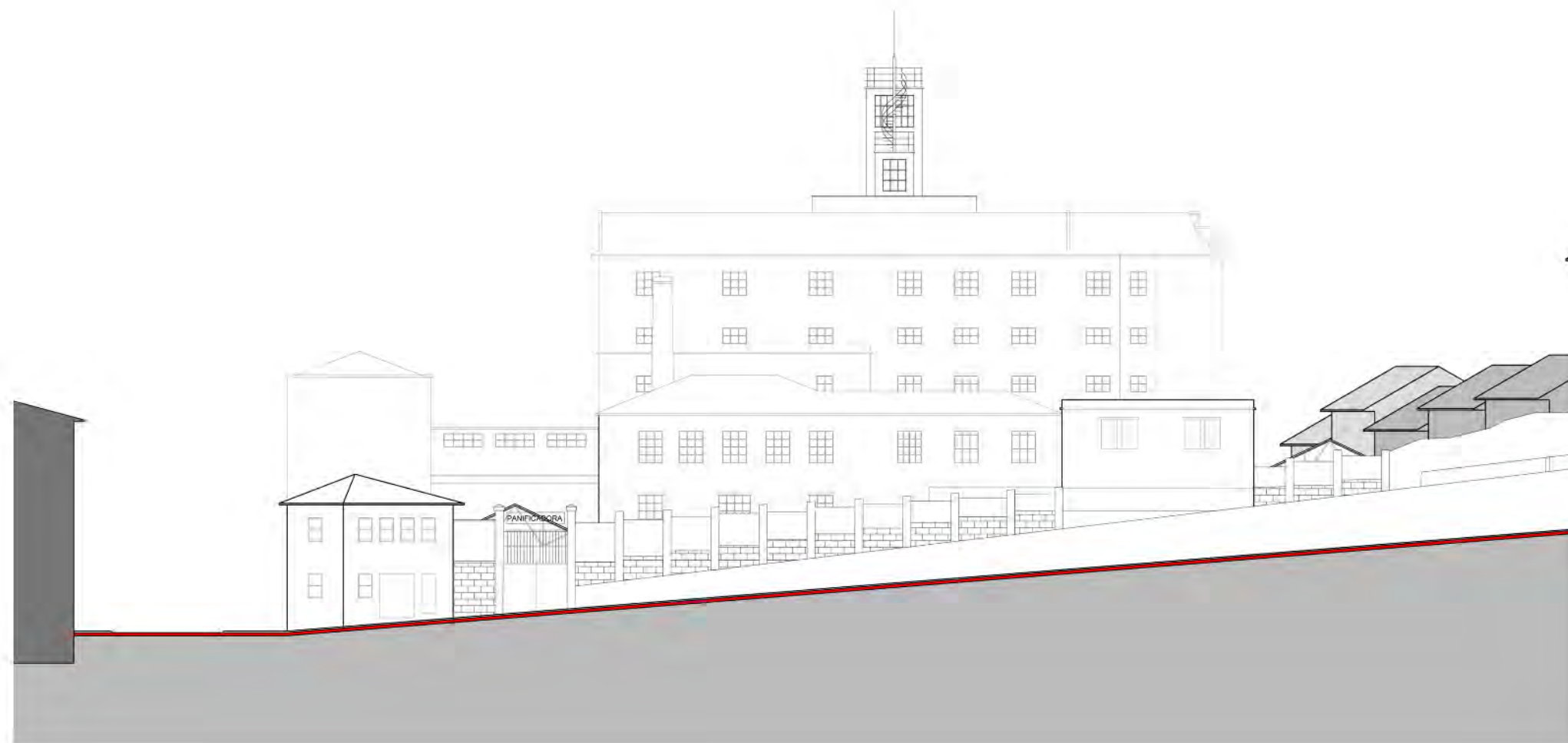
3. Tamaño e distribución dos espazos abertos da zona a rehabilitar no sur do barrio da Falperra



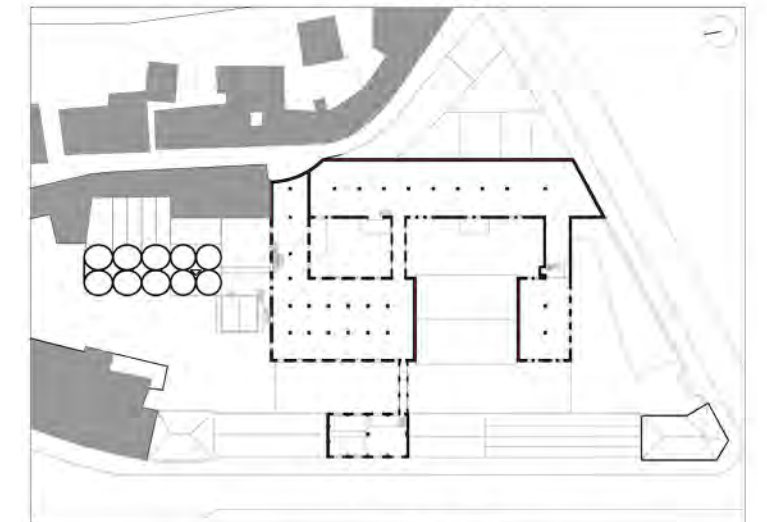
4. Estado das cubertas e alturas do complexo da Panificadora ao final da súa actividade industrial.



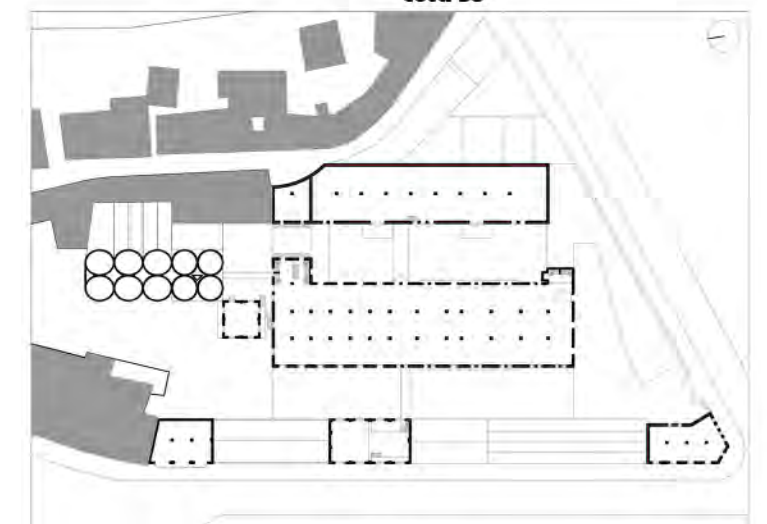
Planos e alzados elaborados por Martín Barreiro Cruz en base a "Puesta en Valor del Patrimonio Industrial de Vigo: Panificadora. Master en restauración arquitectónica ETSAC (Tese) " de Parajó Calvo, M^{re} Elena e Vergara Misol, Yolanda COAG. 2001.



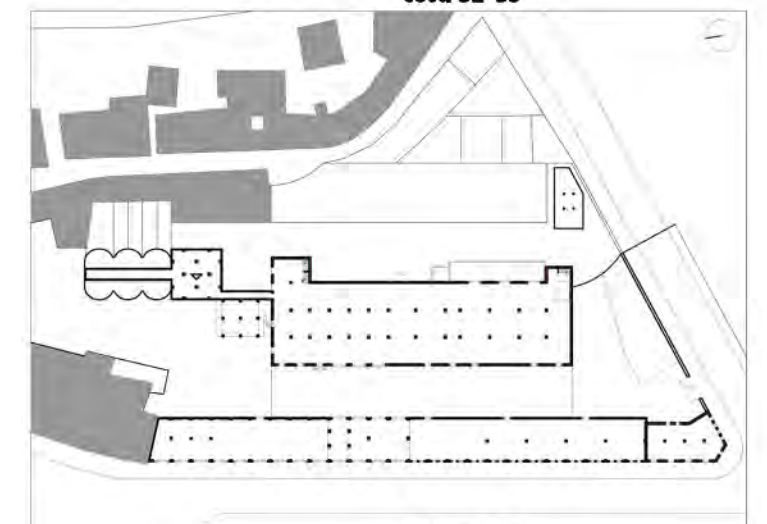
cota 63



cota 58



cota 52-53



cota 49-50